

abbotFox

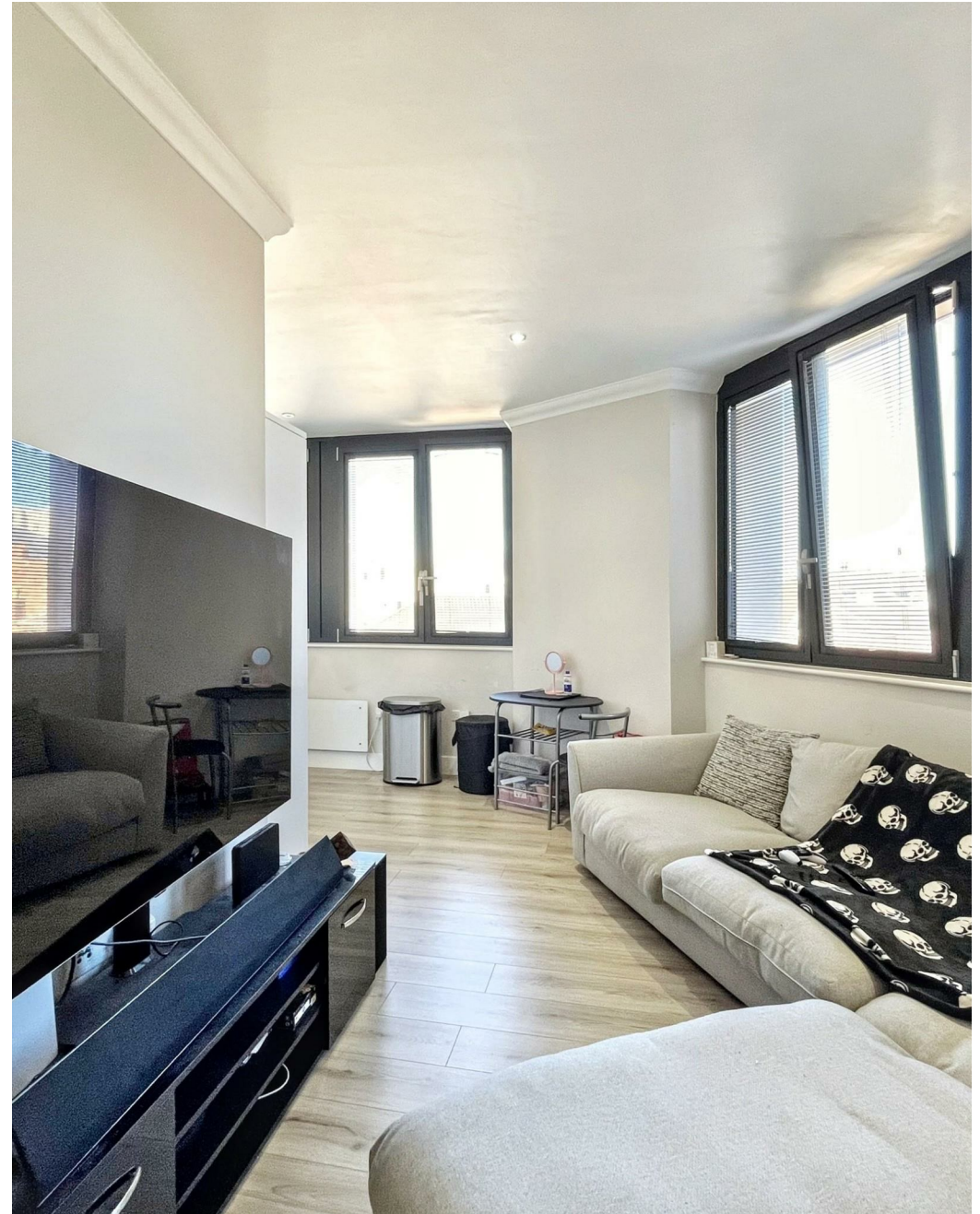


Surrey Street, Norwich
Guide Price £200,000

“

We are a team of genuine individuals who hold a deep passion for both property and marketing. Collectively, we bring over 70 years of experience in the property market of Norfolk and Suffolk. Our affection for both counties runs deep, and we are enthusiastic about sharing our passion with you.

Colin McKenzie | **Branch Partner**







THE DETAIL _____

abbotFox presents this exceptional two-bedroom apartment, set on an upper floor of the iconic Sentinel House development. Combining modern design, city convenience, and the rare benefit of private parking, this is a home that delivers on both style and substance.

The apartment boasts a spacious, light-filled open-plan living area, complete with a contemporary kitchen, integrated appliances, and ample space to entertain or unwind. Large windows offer far-reaching views across the Norwich skyline, enhancing the sense of space and connection to the city beyond.

The property benefits from two bedrooms and a sleek, fully-tiled shower room adds a touch of boutique luxury, completing the interior with a high-spec finish throughout.

With secure entry, lift access, and allocated parking, this apartment offers a turn-key lifestyle in one of Norwich's most well-regarded developments. Ideally located within walking distance of the city centre, shopping, restaurants, and transport links, this apartment makes an ideal home for professionals, first-time buyers or investors alike.

Offered with no onward chain an internal viewing is essential.

Guide Price £215,000 - £225,000





FIRE EXIT

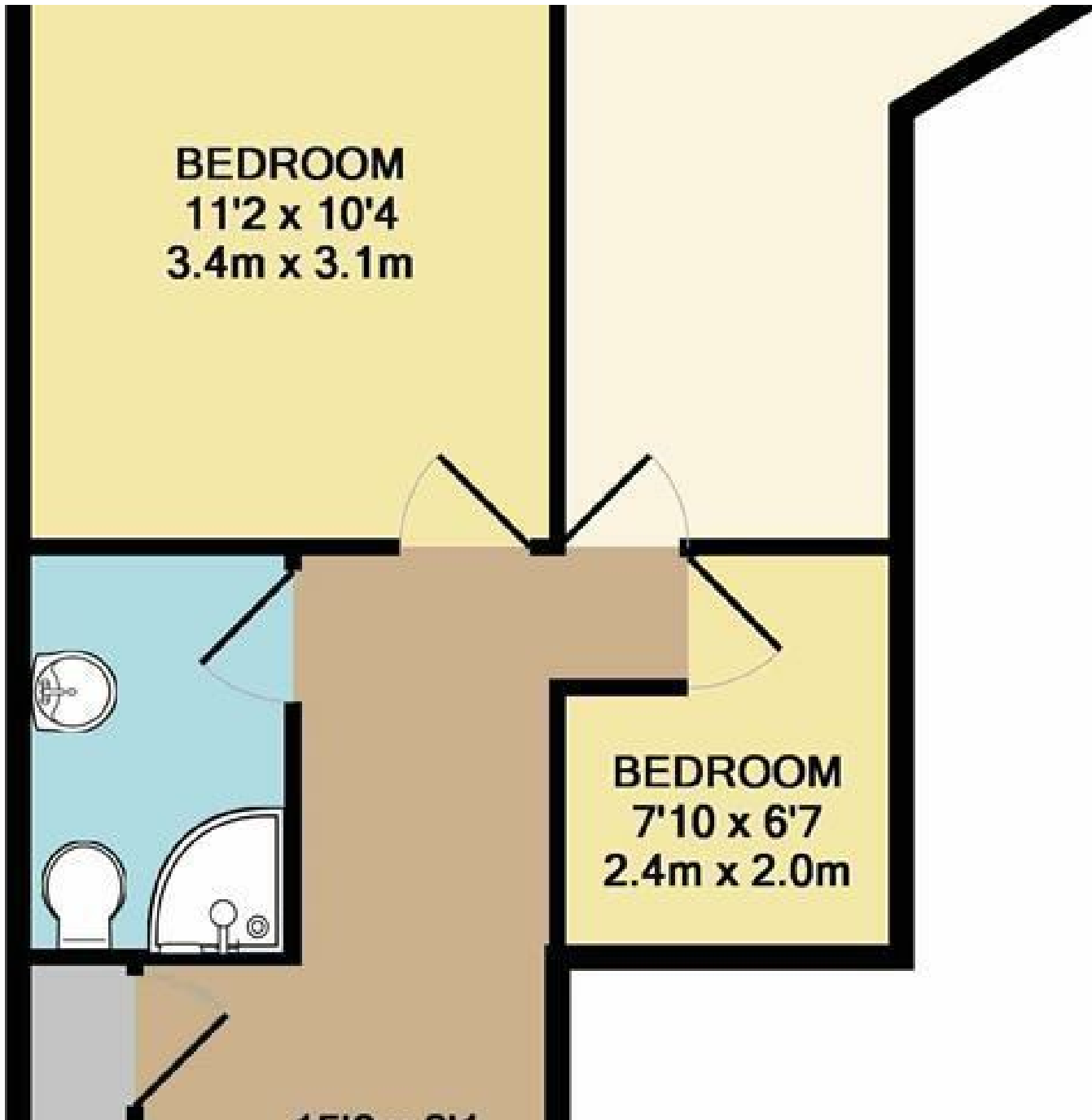
NOTICE BOARD

Mailbox 1	Mailbox 2	Mailbox 3	Mailbox 4	Mailbox 5	Mailbox 6	Mailbox 7	Mailbox 8	Mailbox 9	Mailbox 10	Mailbox 11	Mailbox 12	Mailbox 13	Mailbox 14	Mailbox 15	Mailbox 16	Mailbox 17	Mailbox 18	Mailbox 19	Mailbox 20	Mailbox 21	Mailbox 22	Mailbox 23	Mailbox 24	Mailbox 25	Mailbox 26	Mailbox 27	Mailbox 28	Mailbox 29	Mailbox 30	Mailbox 31	Mailbox 32	Mailbox 33	Mailbox 34	Mailbox 35	Mailbox 36	Mailbox 37	Mailbox 38	Mailbox 39	Mailbox 40	Mailbox 41	Mailbox 42	Mailbox 43	Mailbox 44	Mailbox 45	Mailbox 46	Mailbox 47	Mailbox 48	Mailbox 49	Mailbox 50	Mailbox 51	Mailbox 52	Mailbox 53	Mailbox 54	Mailbox 55	Mailbox 56	Mailbox 57	Mailbox 58	Mailbox 59	Mailbox 60	Mailbox 61	Mailbox 62	Mailbox 63	Mailbox 64	Mailbox 65	Mailbox 66	Mailbox 67	Mailbox 68	Mailbox 69	Mailbox 70	Mailbox 71	Mailbox 72	Mailbox 73	Mailbox 74	Mailbox 75	Mailbox 76	Mailbox 77	Mailbox 78	Mailbox 79	Mailbox 80	Mailbox 81	Mailbox 82	Mailbox 83	Mailbox 84	Mailbox 85	Mailbox 86	Mailbox 87	Mailbox 88	Mailbox 89	Mailbox 90	Mailbox 91	Mailbox 92	Mailbox 93	Mailbox 94	Mailbox 95	Mailbox 96	Mailbox 97	Mailbox 98	Mailbox 99	Mailbox 100
-----------	-----------	-----------	-----------	-----------	-----------	-----------	-----------	-----------	------------	------------	------------	------------	------------	------------	------------	------------	------------	------------	------------	------------	------------	------------	------------	------------	------------	------------	------------	------------	------------	------------	------------	------------	------------	------------	------------	------------	------------	------------	------------	------------	------------	------------	------------	------------	------------	------------	------------	------------	------------	------------	------------	------------	------------	------------	------------	------------	------------	------------	------------	------------	------------	------------	------------	------------	------------	------------	------------	------------	------------	------------	------------	------------	------------	------------	------------	------------	------------	------------	------------	------------	------------	------------	------------	------------	------------	------------	------------	------------	------------	------------	------------	------------	------------	------------	------------	------------	------------	------------	-------------



THE HIGHLIGHTS _____

- Two bedrooms
- Residents' lounge
- Residents' gym
- Second Floor
- City centre location
- Opposite John Lewis
- Norwich's most exciting development
- Concierge service
- Allocated Parking
- Viewing advised



Let's talk

01603 660000

sales@abbotfox.co.uk

@abbotfox

EPC RATING -

Disclaimer – In accordance with the Property Misdescriptions Act, the company abbotFox gives notice that all descriptions, references to condition, necessary permissions for use and other details are given in good faith and believed to be correct, but any purchaser should not rely on them as statements of fact, and must satisfy themselves by inspection or other means, as to their accuracy.